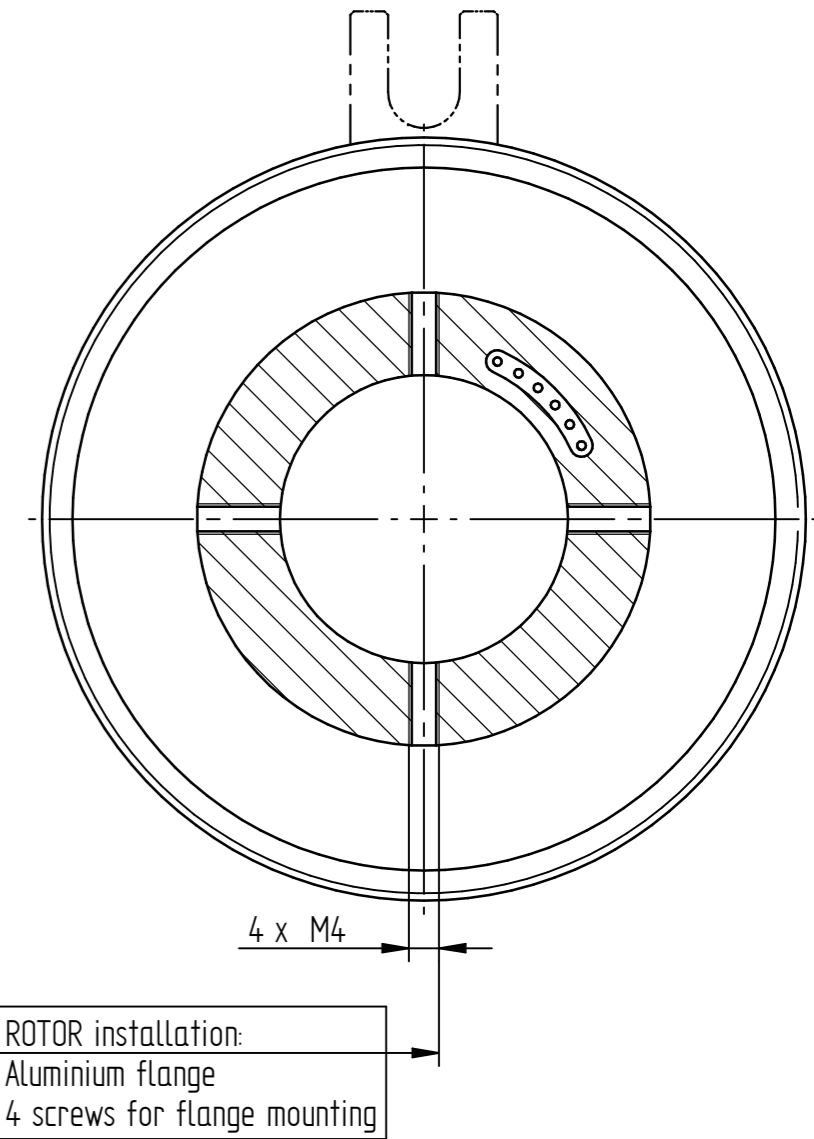
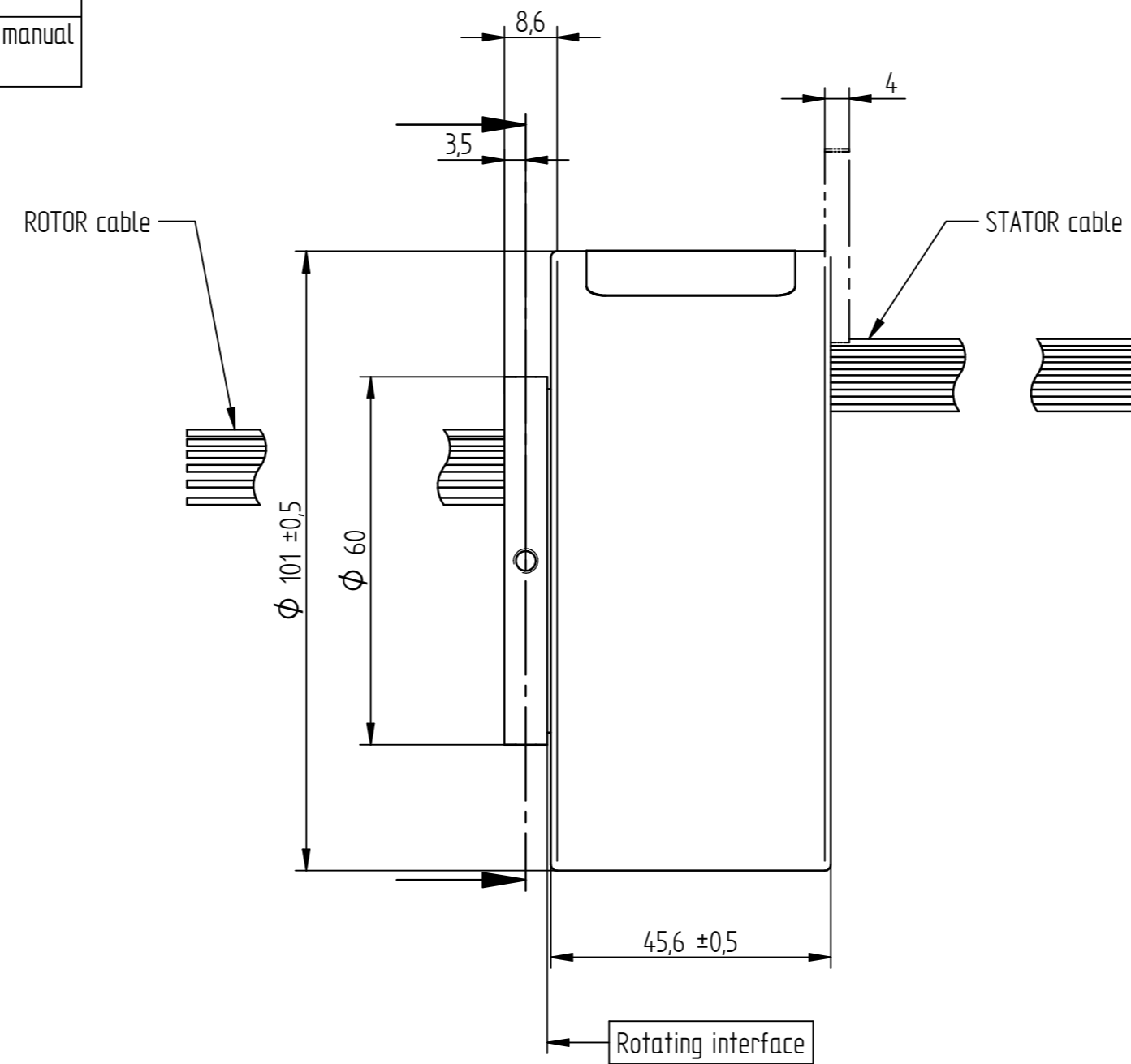


STATOR installation:
Anti-rotation tab to be mounted optionally, see manual
Anti-rotation tab is enclosed in the packaging



ROTOR installation:
Aluminium flange
4 screws for flange mounting

Wiring diagramm see sheet 2

Die Montageanleitung 7BC000000 wird elektronisch bereitgestellt.
The assembly instruction 7BC000000 is provided in electronic format.

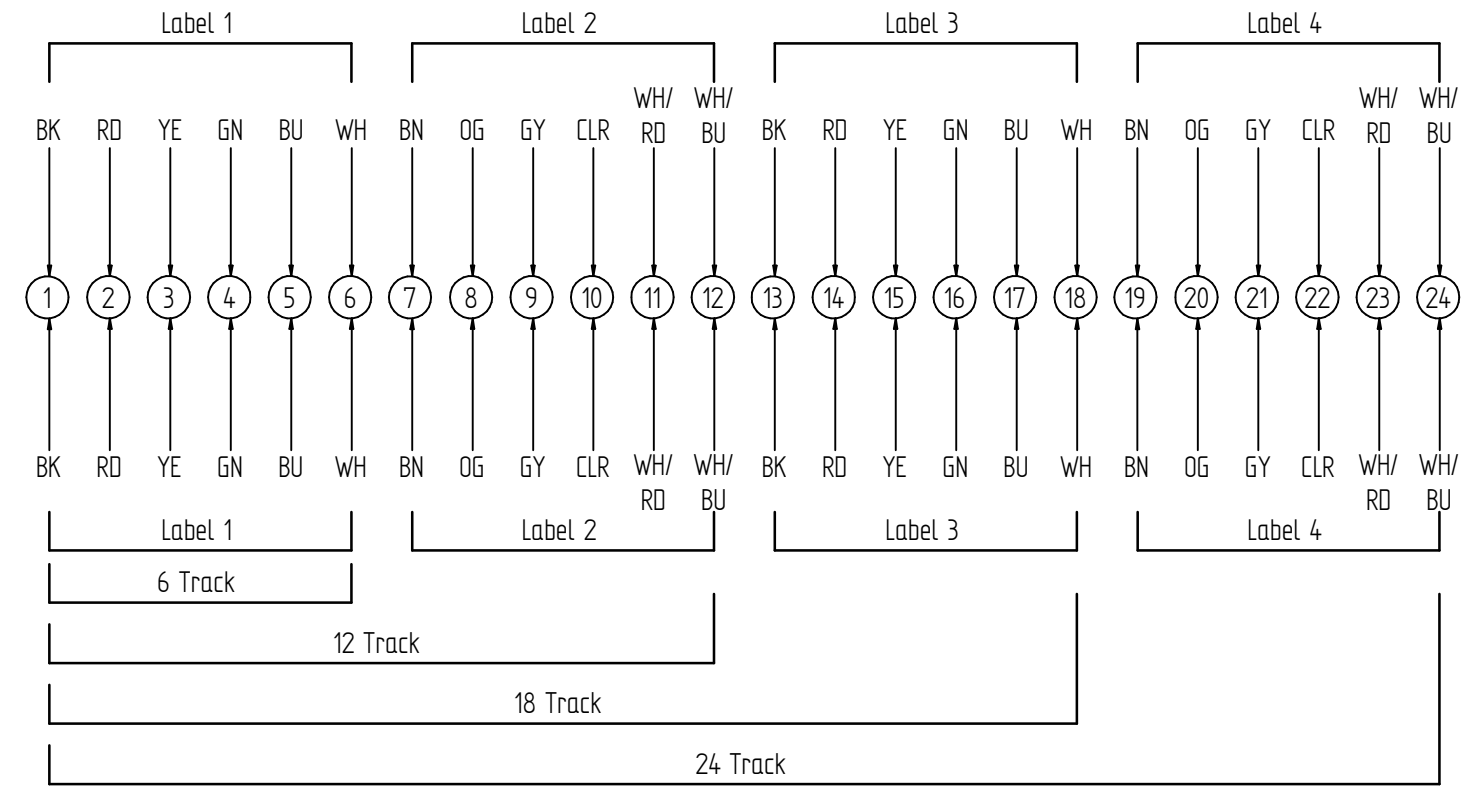
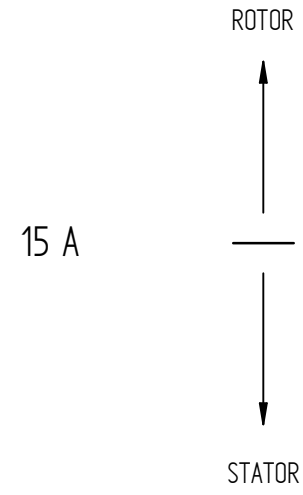
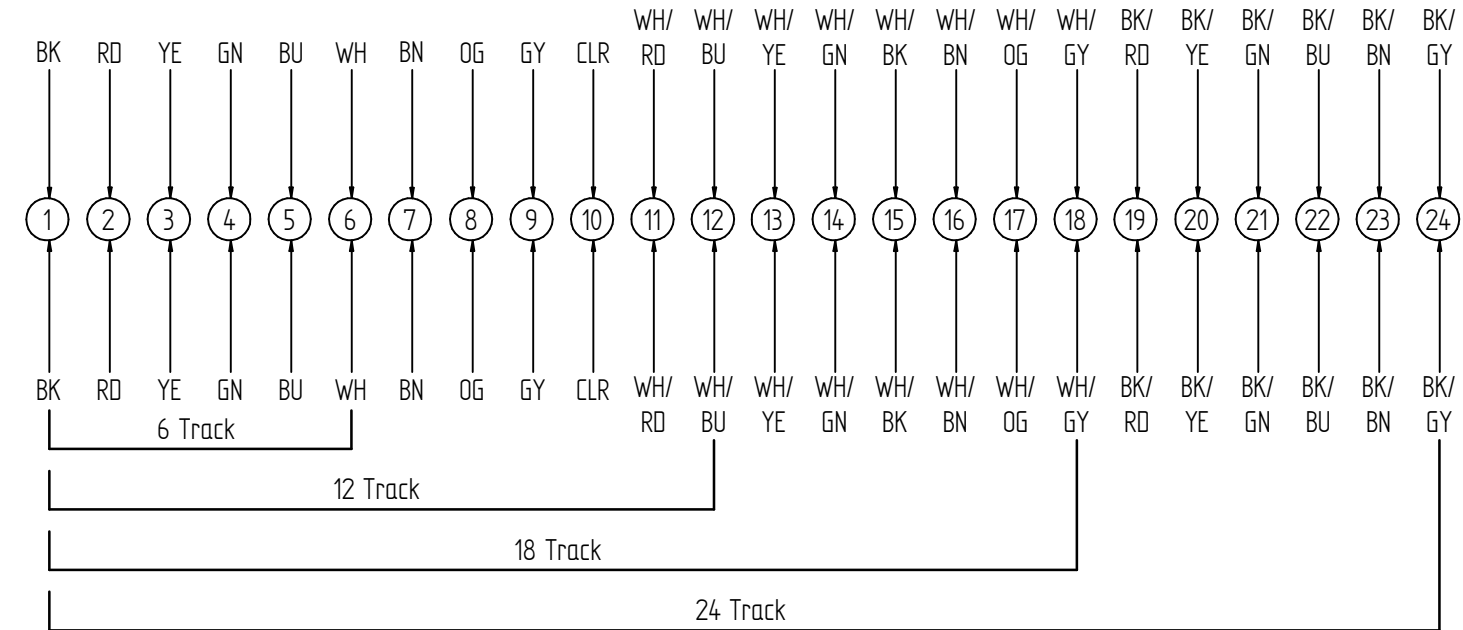
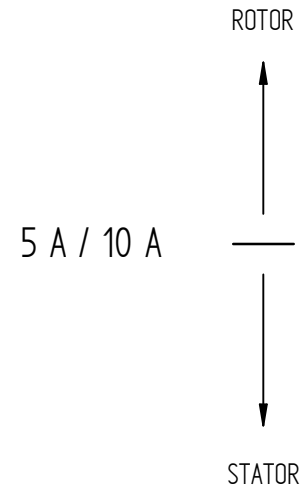
ELECTRONIC & ELECTRIC		MECHANICAL	
Rating Voltage	250 V AC / DC	Working Speed	300 rpm max.
		Inner Diameter	$\phi 38,1$
		Contact Material	Precious Metals
Current	5 A / Signal	Lead Wire Length	STATOR: 250 mm ROTOR: 250 mm
Track	6	/	/
Insulation Resistance	500 M Ω @ 500 V DC	/	/
ENVIRONMENT		REMARKS	
Working Temperature	-20 °C to +60 °C	Application	see Manual
Working Humidity	$\leq 60\%$ RH	Other	/
Protection Class	IP50	Note:	/

10	1	70C000013	Maverick Schleifring 6-Weg 5A		
Pos.	Anz.	Mat.Nr.	Kurztext	GroÙe/Abmessung	Werkstoff
1	2	3	4	5	6
DIN ISO 5456-2		TOLERANCES		DIN ISO 13715	
ISO 2768 - mH		$\begin{matrix} +0,3 \\ +0,1 \end{matrix}$ $\begin{matrix} -0,1 \\ -0,3 \end{matrix}$		FINISH	
				SCALE 1:1	
				WEIGHT 0,001 kg	
STANDARDS		DWG NO		REVISION	
ISO 8015		7KC000013		A1	
ISO 14405				FIRST RELEASE 21.12.2021	
				DESIGNER CREITER 16.11.2022	
				APPROVED AGREPPMAYR 21.11.2022	
				CHANGE NO 200120151	
				DOCUMENT TYPE Kundenzeichnung	
				SHEET 1/2	
SCHLEIFRING		Beschreibung Maverick Schleifring 6-Weg 5A Maverick Slip Ring 6-Track 5A		SIZE/DIM	
		Drafft: 1000954591/D02/000/03		Modell: 1000954591/D00/000/03	
				A2	

All drawings are the property of Schleifring GmbH/ Germany and are to be treated as confidential. The reproduction, distribution and utilization as well as the communication of its contents to others without express authorization is prohibited. Offenders will be held liable for the payment of damages. All rights reserved in the event of the grant of a patent, utility model or design.

All drawings are the property of Schleifring GmbH/ Germany and are to be treated as confidential. The reproduction, distribution and utilization as well as the communication of its contents to others without express authorization is prohibited. Offenders will be held liable for the payment of damages. All rights reserved in the event of the grant of a patent, utility model or design.

Cable Table	
Current	Cable
5 A / Signal	AWG17
10 A	
15 A	AWG14



DIN ISO 5456-2 	TOLERANCES ISO 2768 - mH	DIN ISO 13715 +0,3 +0,1 -0,1 -0,3	FINISH	SCALE 1:1	REFERENCE 2
STANDARDS ISO 8015 ISO 14405		DWG NO 7KC000013	MATERIAL	WEIGHT 0,001 kg	REFERENCE 1
		Beschreibung Maverick Schleifring 6-Weg 5A DESCRIPTION Maverick Slip Ring 6-Track 5A SIZE/DIM.	REVISION A1	FIRST RELEASE	21.12.2021
			APPROVED AGREPPMAYR	DESIGNER CREITER	16.11.2022
			CHANGE NO 200120151	SHEET 2/2	